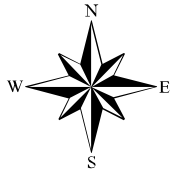


# MONTEREY COUNTY

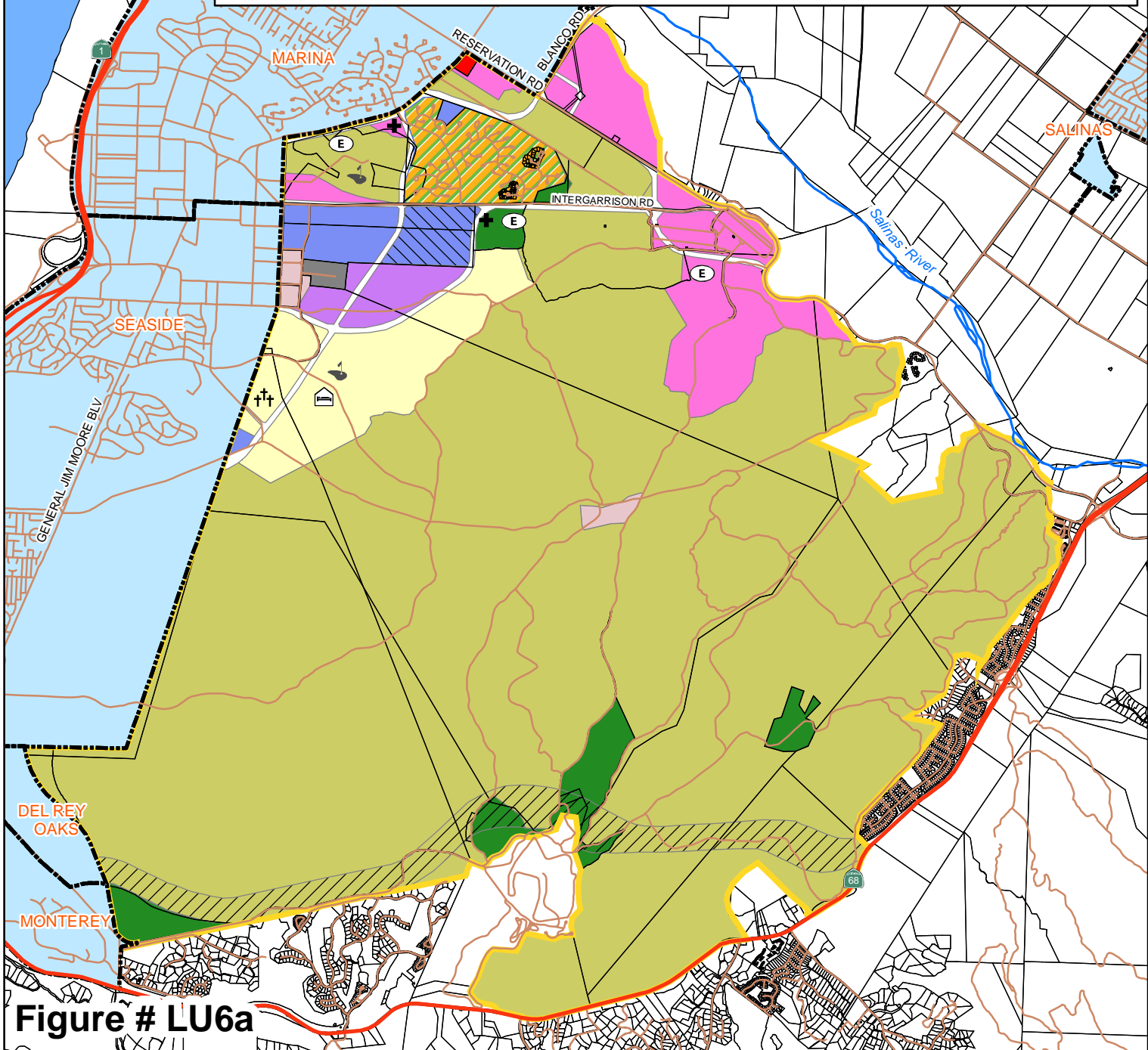
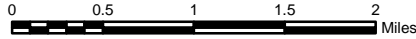
## Land Use Plan

### Fort Ord Master Plan



- |                   |   |   |                                    |
|-------------------|---|---|------------------------------------|
| Highway           | SFD Low Density Residential               | School/University                                   | Veterans Cemetery                  |
| Road              | Residential Infill Opportunities          | University Medium Density Residential               | Convenience Retail                 |
| River             | Planned Development Mixed Use District    | Regional Retail                                     | Golf Course Opportunity Site       |
| Community Area    | Business Park/Light industrial Office/R&D | Military Enclave                                    | Hotel Opportunity Site             |
| Incorporated City | Open Space Recreation                     | Public Facility/Institutional                       | Equestrian Center Opportunity Site |
| Parcel            | Habitat Management                        | Highway 68 Bypass ROW; Development with Restriction |                                    |

Map Prepared by Monterey County Planning Dept. October 24, 2006  
 Sources: Monterey County IT/GIS= Roads, City Limits, Monterey County Assessor= Parcels , Monterey County Planning Dept.= Planning Areas, Fort Ord Reuse Authority= Land Use



**Figure # LU6a**