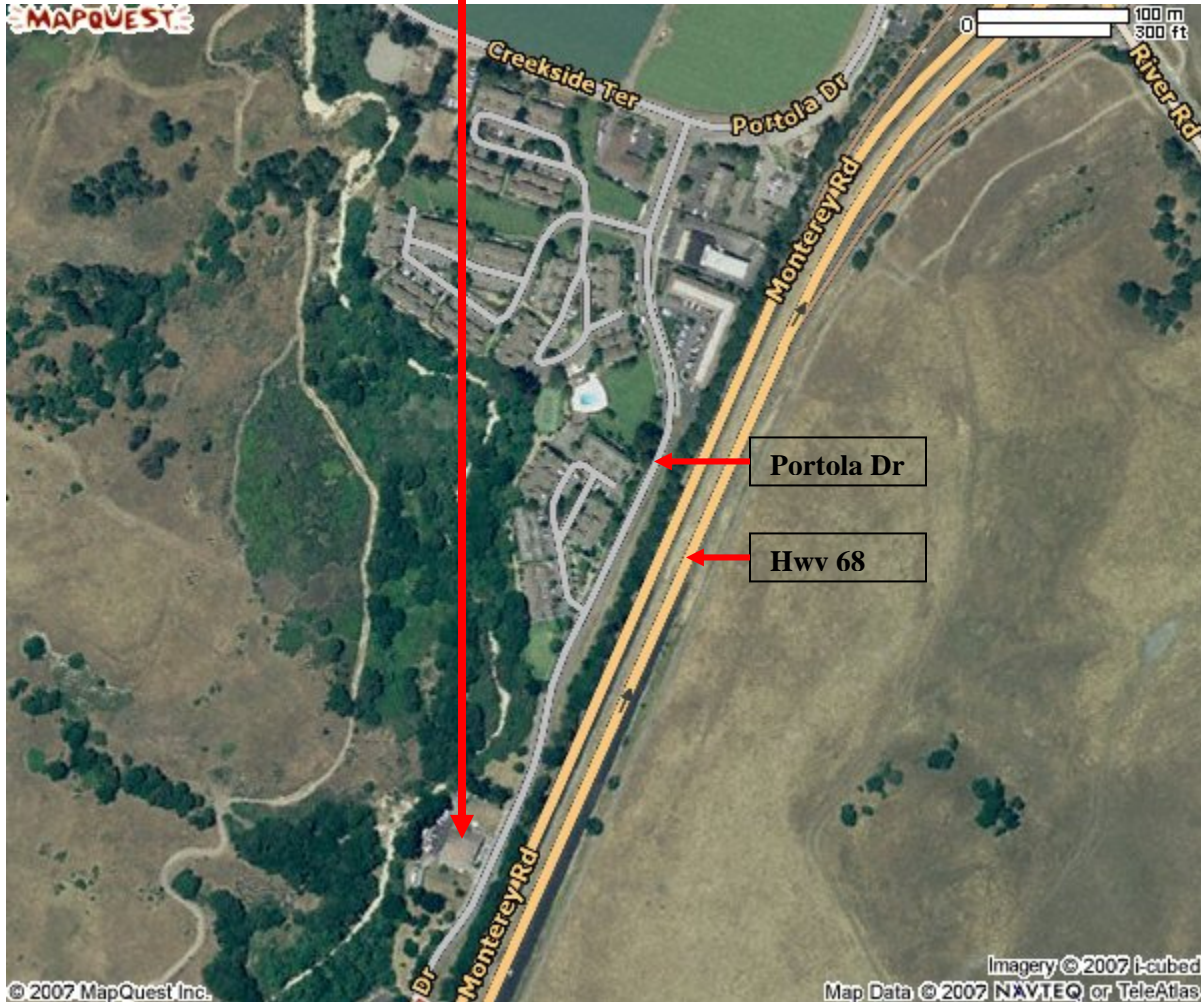




Salinas Rural Fire Protection
District Community Room
(Administration Building)
19900 Portola Dr
Salinas CA 93908

The meeting location is down the street from Creekside subdivision



[All rights reserved. Use Subject to License/Copyright](#) | [Map Legend](#)

This map is informational only. No representation is made or warranty given as to its content. User assumes all risk of use. MapQuest and its suppliers assume no responsibility for any loss or delay resulting from such use.