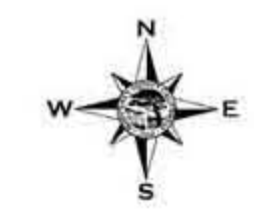


Monterey County



Existing Noise Contours Roadways North County



- Parcel
- Highway
- River
- Water Body
- City Limit
- Coastal Zone
- Planning Area

- ### Existing Roadway Noise Levels
- Existing Roadway Studied
 - 60 CNEL Noise Contour
 - 65 CNEL Noise Contour
 - 70 CNEL Noise Contour

Map Prepared By: Monterey County ERP/GIS. Date Produced: January 7, 2004.
 Sources: Roads = Monterey County IT/GIS. City Limits = Monterey County ERP/GIS. Planning Areas & Coastal Zones = Monterey County ERP/GIS.
 Parcels = Monterey County IT/GIS. Noise Data & Site Locations = Mestres Greve & Associates.

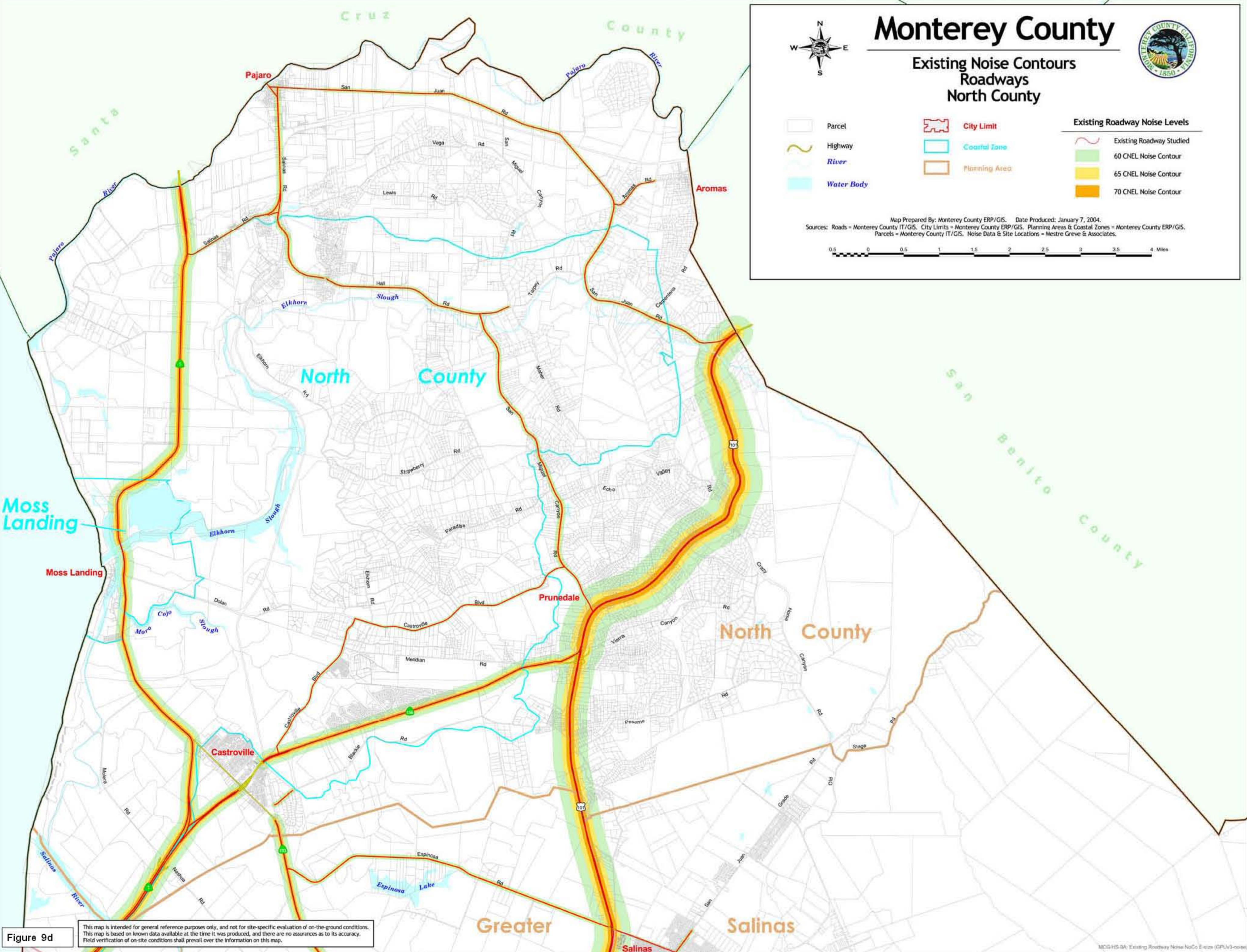


Figure 9d
 This map is intended for general reference purposes only, and not for site-specific evaluation of on-the-ground conditions. This map is based on known data available at the time it was produced, and there are no assurances as to its accuracy. Field verification of on-site conditions shall prevail over the information on this map.