

Monterey County



Existing Noise Contours Roadways South County



- | | | | |
|------------|---------------|--------------------------------------|--------------------------|
| Parcel | City Limit | Existing Roadway Noise Levels | |
| Highway | Coastal Zone | Existing Roadway Studied | Existing Roadway Studied |
| River | Planning Area | 60 CNEL Noise Contour | 60 CNEL Noise Contour |
| Water Body | | 65 CNEL Noise Contour | 65 CNEL Noise Contour |
| | | 70 CNEL Noise Contour | 70 CNEL Noise Contour |

Map Prepared By: Monterey County ERP/GIS. Date Produced: January 7, 2004.
Sources: Roads = Monterey County IT/GIS. City Limits = Monterey County ERP/GIS. Planning Areas & Coastal Zones = Monterey County ERP/GIS.
Parcels = Monterey County IT/GIS. Noise Data & Site Locations = Mestre Greve & Associates.

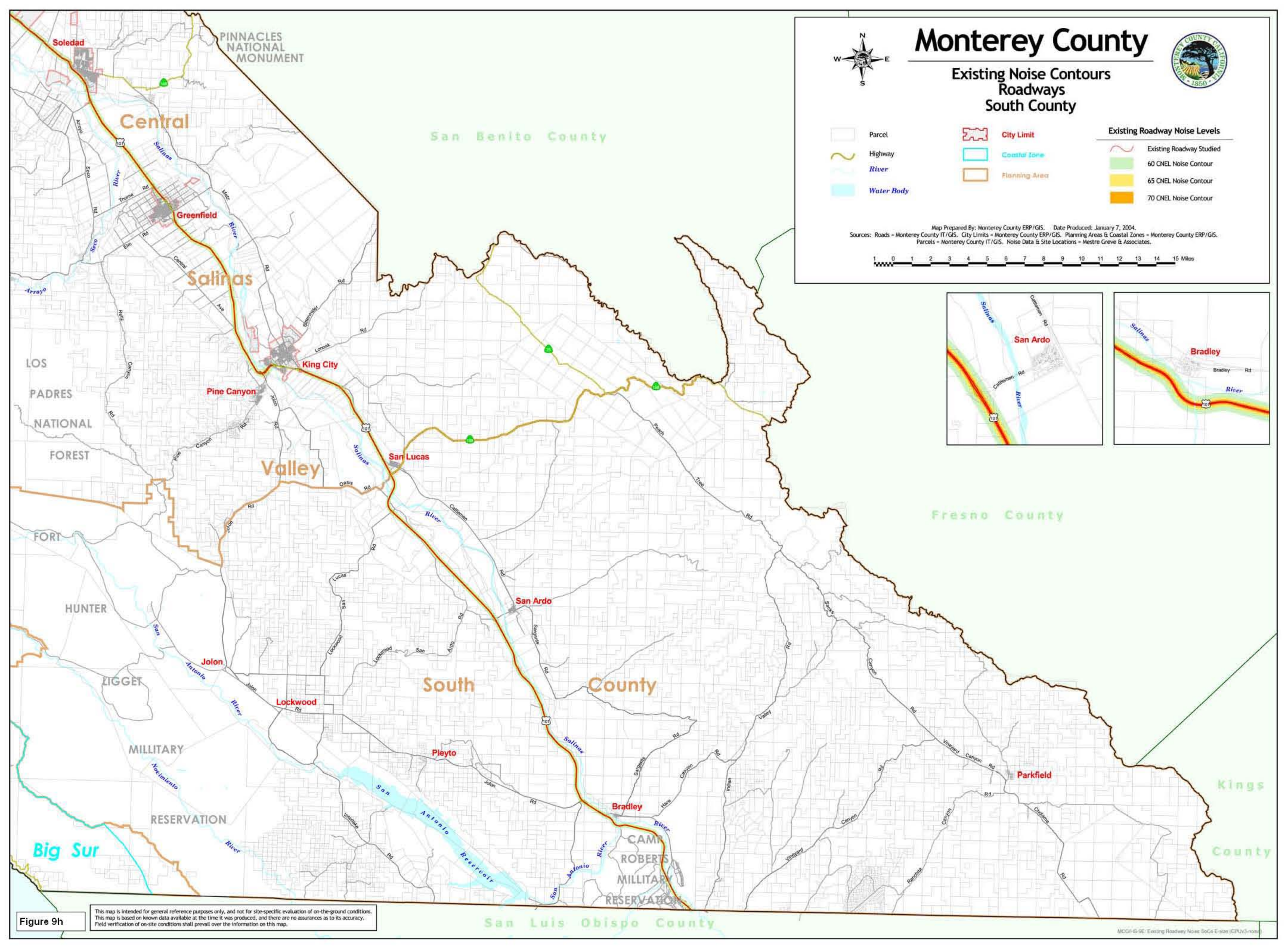


Figure 9h

This map is intended for general reference purposes only, and not for site-specific evaluation of on-the-ground conditions. This map is based on known data available at the time it was produced, and there are no assurances as to its accuracy. Field verification of on-site conditions shall prevail over the information on this map.