

Moss Landing Corridor Improvement Study

Moss Landing Harbor District
Board Room

October 29, 2015



Monterey County RMA
Fehr & Peers Transportation Consultants

October 29, 2015

Opening Remarks and Progress Reports

- Purpose of Tonight's Meeting
- Introductions
- Status Reports
 - Undergrounding Project
 - History and Heritage Center
 - Monterey Bay National Marine Sanctuary Scenic Trail
 - Moss Landing Community Plan and DEIR



October 29, 2015

Overview of Highway 1 Corridor

- Congestion and Operational Concerns on Highway 1
 - Dolan Road
 - Moss Landing Road (North End)
 - Moss Landing Road (South End)
 - Pieri Court/Potrero Road
- Past Studies
 - History and Heritage Center EIR (1986)
 - State Routes 1 & 183 Corridor System Management Plan (2011)
 - Dolan Road Study (2015)



Highway 1 Corridor Improvement Study

- Study Objective:
Recommend set of improvements that will provide the optimal solution to existing and projected future congestion and operational concerns along the State Route 1 corridor in Moss Landing
- Study Corridor
- Three Improvement Scenarios to be Developed

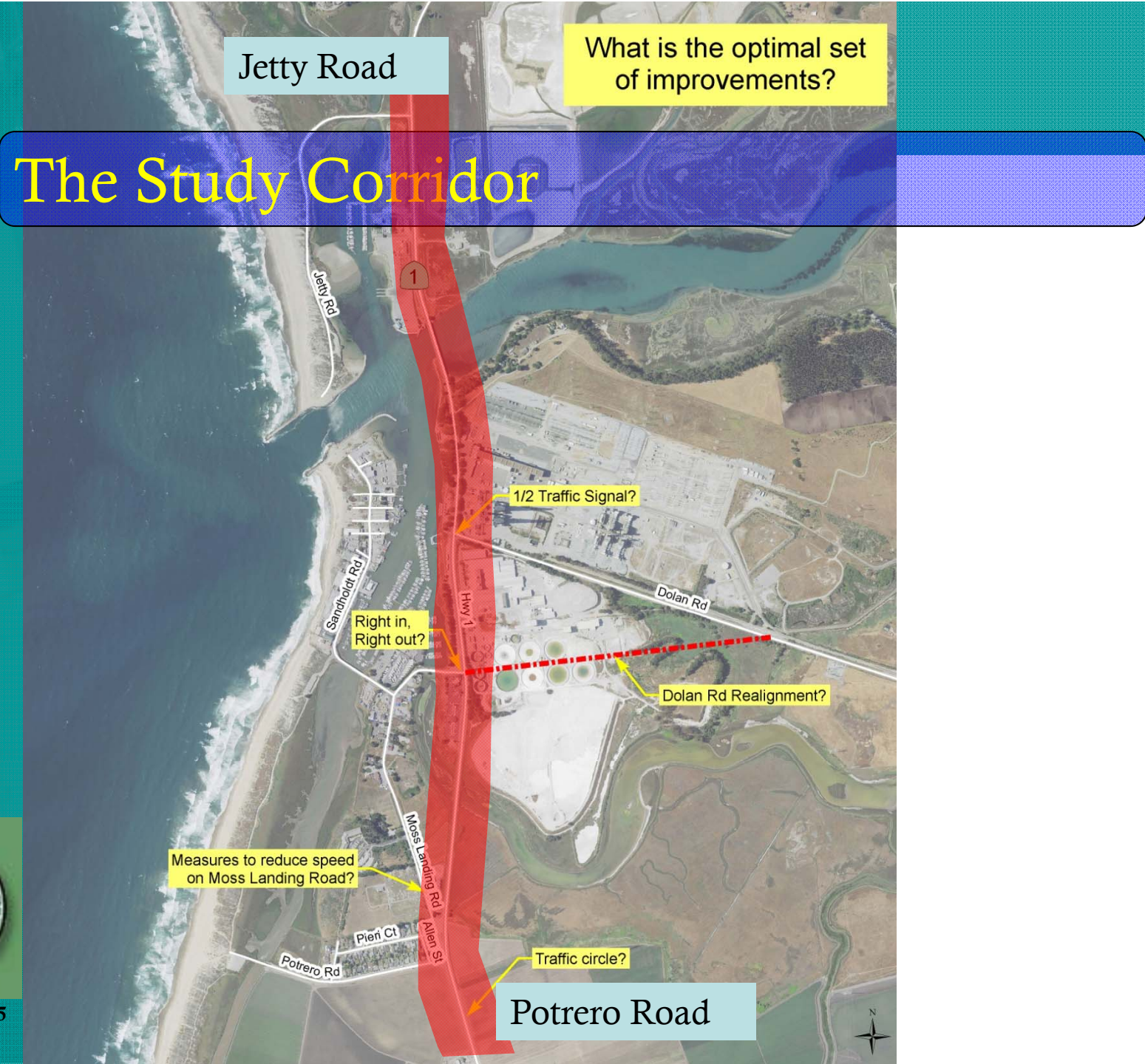


October 29, 2015

Jetty Road

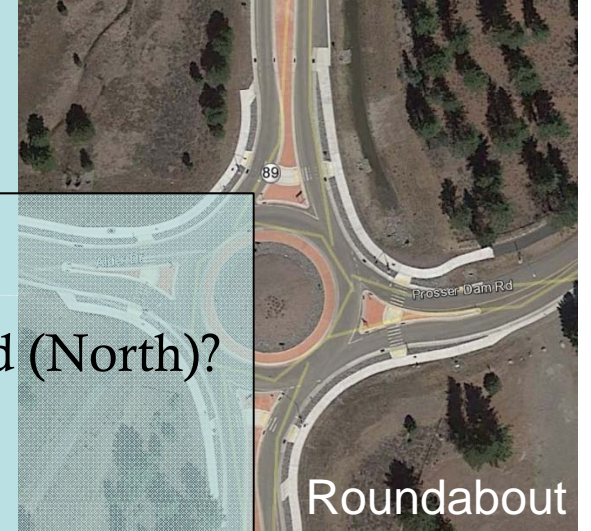
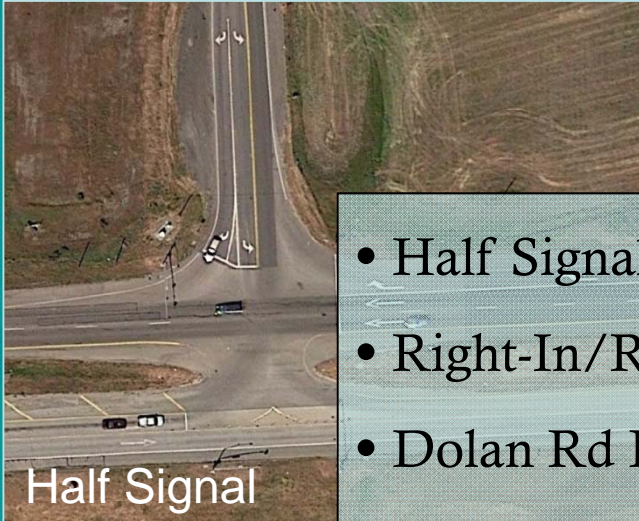
What is the optimal set of improvements?

The Study Corridor

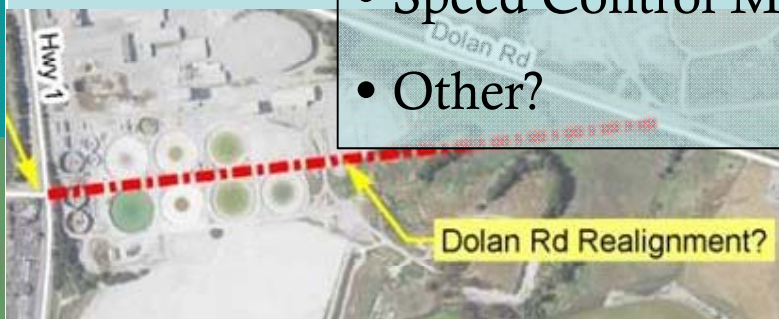


October 29, 2015

Beginning List of Ideas



- Half Signal at Dolan Rd?
- Right-In/Right-Out at ML Rd (North)?
- Dolan Rd Re-Alignment?
- Roundabout at Potrero?
- Speed Control Measures for ML Rd?
- Other?



Community Discussion

- Community Input Needed
 - What are the Community's Concerns?
 - What Do You Think the Solution Is?



October 29, 2015

Project Schedule and Next Steps

- *Hold First Community Meeting*
- Identify and Analyze Three Improvement Scenarios
- *Hold Second Community Meeting*
- Compile Preferred Scenario
- Prepare Draft Final Evaluation
- *Hold Final Community Meeting*
- Publish Final Report



Moss Landing Corridor Improvement

October 29, 2015

Sign-In Sheet

Name

Email

Phone No



October 29, 2015