

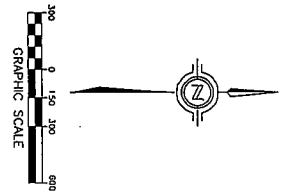
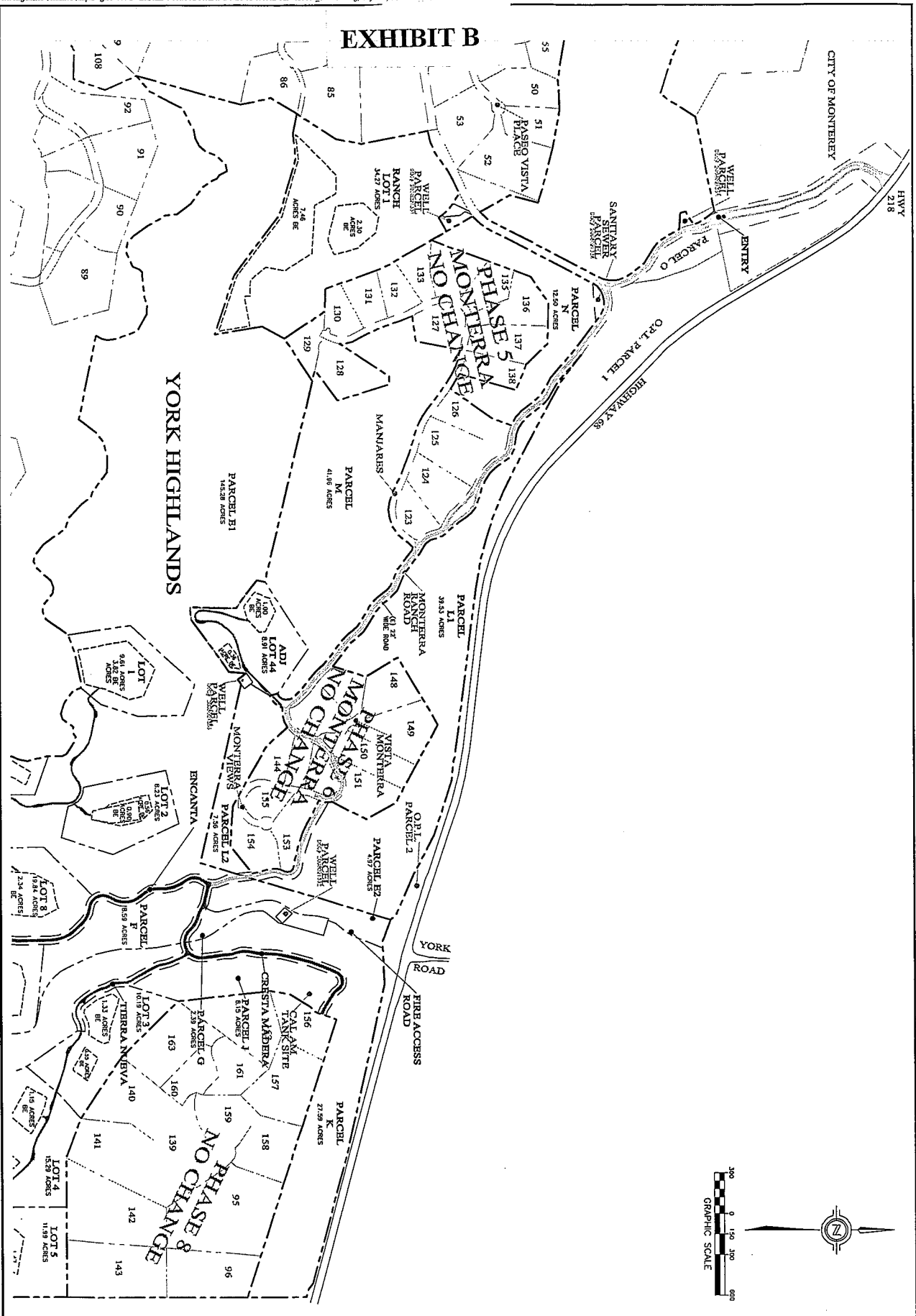
Exhibit B
Draft Board Resolution
2. Revised Vesting Tentative Map Pages

Banker's Development Group, LLC
(York Highlands)
PLN120024

Board of Supervisors
February 7, 2012



EXHIBIT B

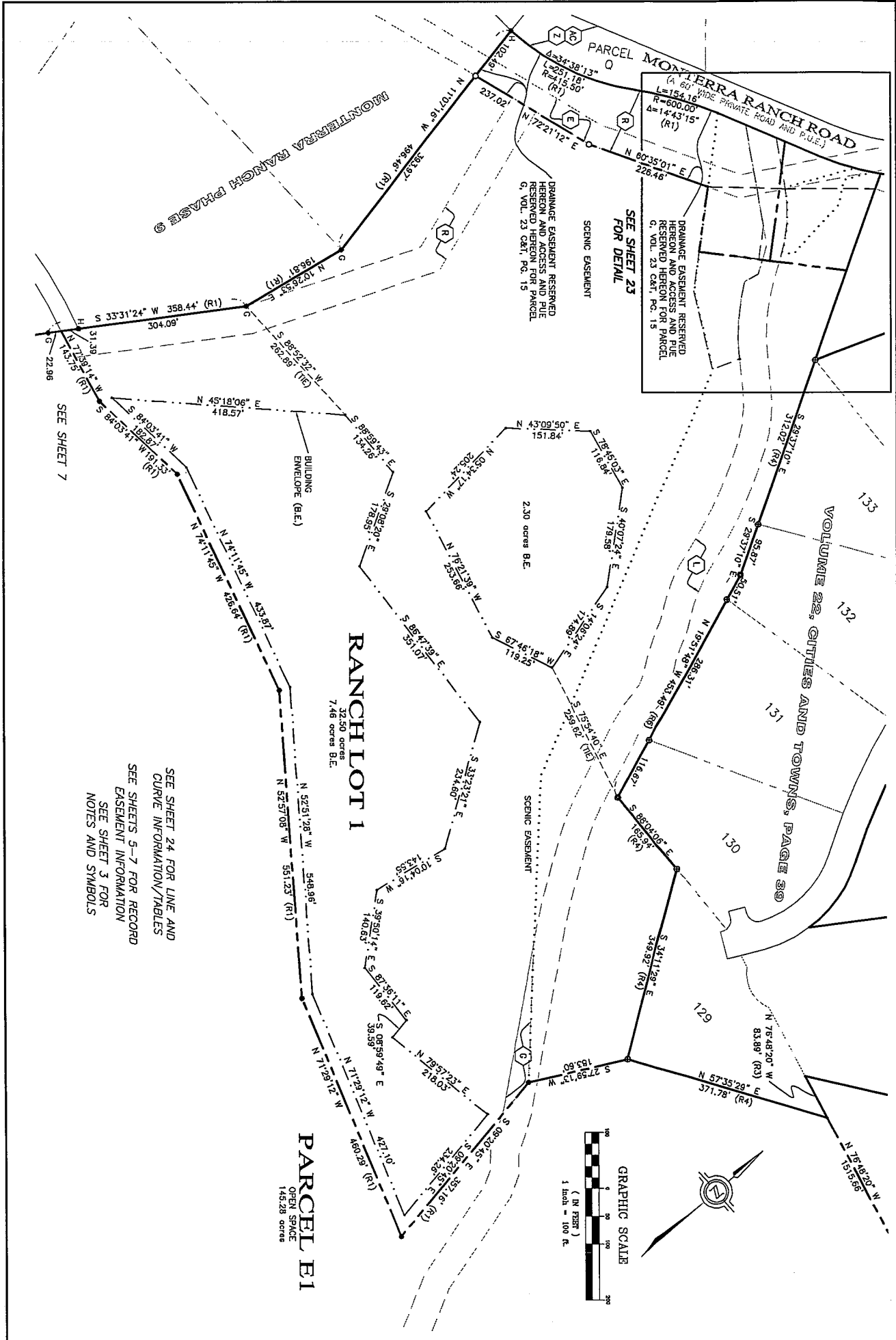


YORK HIGHLANDS
MONTEREY COUNTY, CA

ILLUSTRATION OF
HIGHWAY 218 ACCESS

DRAWN BY: MRS
DESIGNED BY: N/A
DATE: 10-12-11
SCALE: AS SHOWN
JOB NUMBER: 01-444
LAST REVISED: 1-27-12
REVISED BY: JLL

SHEET 1
OF
1 SHEETS



MONTEIRA RANCH PHASE ©

PARCEL MONTEIRA RANCH ROAD
 (A 60' WIDE PRIVATE ROAD AND P.U.E.)
 L=154.16'
 R=600.00'
 Δ=14°43'15" (R1)

SCENIC EASEMENT
 DRAINAGE EASEMENT RESERVED HEREON AND ACCESS AND PUE RESERVED HEREON FOR PARCEL G, VOL. 23 C&T, PG. 15

SEE SHEET 23 FOR DETAIL

BUILDING ENVELOPE (B.E.)

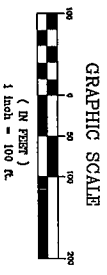
RANCH LOT 1
 32.50 acres
 7.46 acres B.E.

VOLUME 22, CITIES AND TOWNS, PAGE 30

SEE SHEET 7

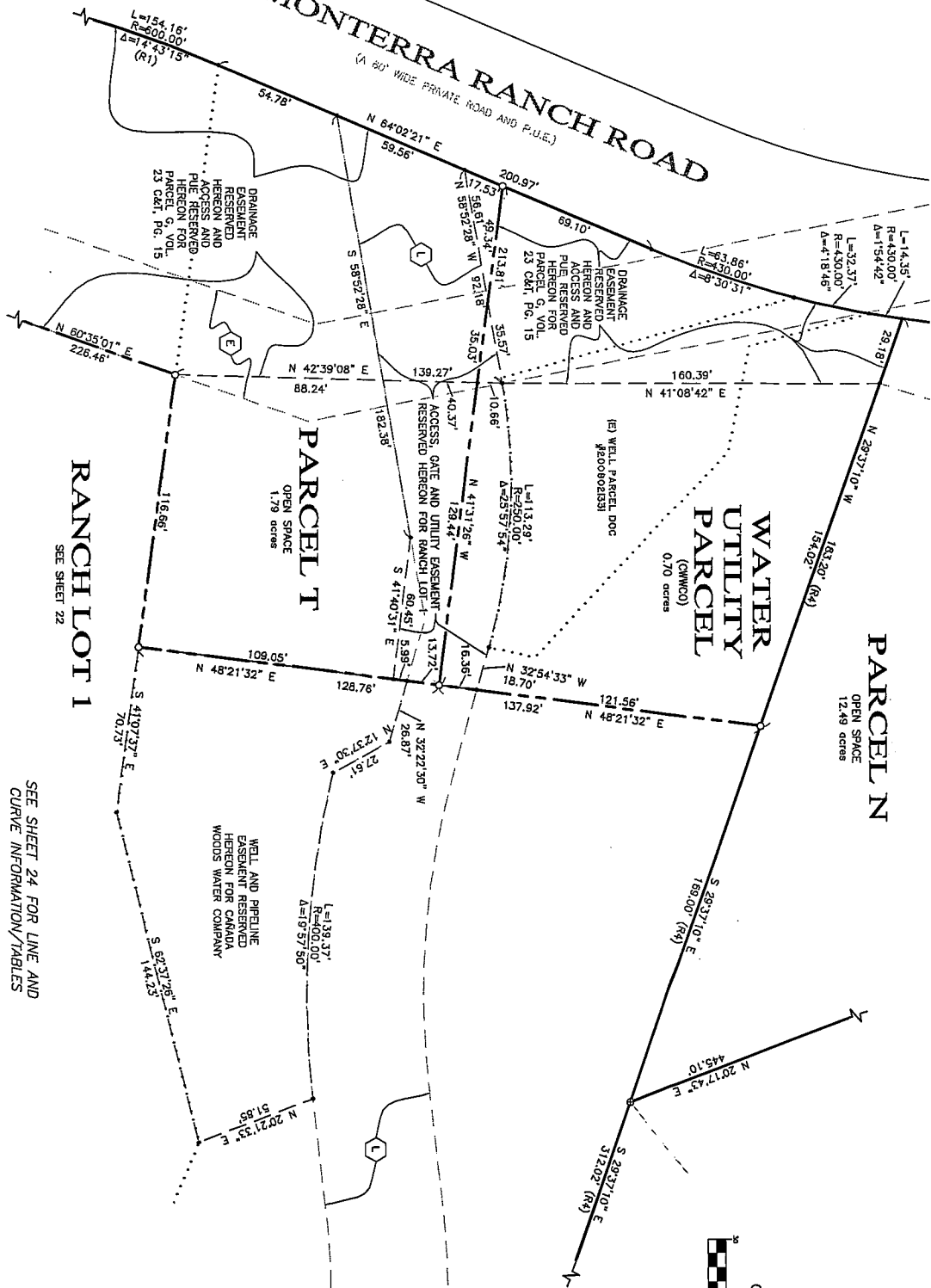
SEE SHEET 24 FOR LINE AND CURVE INFORMATION/TABLES
 SEE SHEETS 5-7 FOR RECORD EASEMENT INFORMATION
 SEE SHEET 3 FOR NOTES AND SYMBOLS

PARCEL E1
 OPEN SPACE
 145.28 acres



MONTEIRA RANCH ROAD

(A 60' WIDE PRIVATE ROAD AND P.U.I.E.)



SEE SHEET 24 FOR LINE AND CURVE INFORMATION/TABLES
 SEE SHEETS 5-7 FOR RECORD EASEMENT INFORMATION
 SEE SHEET 3 FOR NOTES AND SYMBOLS

