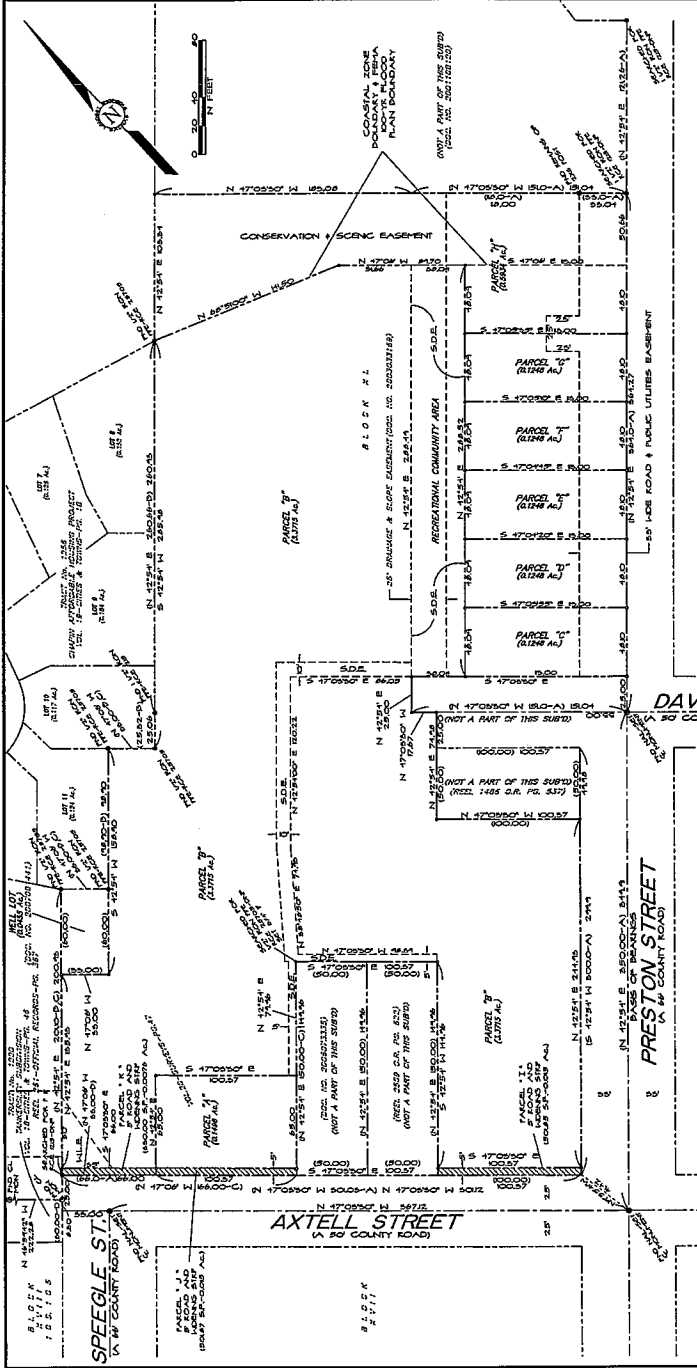


Final Map

Chapin-Axtell
PLN080039

Board of Supervisors
July 12, 2011



BLOCK #111
 APN: 030-041-008, 003, 001, 004, 005,
 030-011-008, 011, 030-054-014*
TRACT No.
AXTELL STREET PROPERTIES
 (IN THE COUNTY OF MONTEREY)
 A LOT CONSOLIDATION AND RE-SUBDIVISION OF
 TRACTS 130, 131, 132, 133, 134, 135, 136, 137,
 138, 139, 140, 141, 142, 143, 144, 145, 146,
 147, 148, 149, 150, 151, 152, 153, 154, 155,
 156, 157, 158, 159, 160, 161, 162, 163, 164,
 165, 166, 167, 168, 169, 170, 171, 172, 173,
 174, 175, 176, 177, 178, 179, 180, 181, 182,
 183, 184, 185, 186, 187, 188, 189, 190, 191,
 192, 193, 194, 195, 196, 197, 198, 199, 200
 AND SHOWN AS REMAINDER PARCEL - VOL. 19 OF PG. 18
 RECORDS OF THE COUNTY OF MONTEREY, CALIFORNIA
 FILED FOR RECORD ON APRIL 26, 1981 AT PG. 54
 RECORDS OF THE COUNTY OF MONTEREY, CALIFORNIA
 APRIL 2011 SCALE: 1" = 40'
 LandSet Engineers, Inc. Salinas, CA. SHEET 3 OF 3

- NOTES**
1. RECORD BEARINGS AND DISTANCES AND/OR DIMENSIONS ARE SHOWN IN PARALLELS.
 2. SHOWN IN THIS MAP AND BEARING THEREON.
 3. BEARING AND DISTANCE ARE FOR THE MAIN PART.
 4. BEARING AND DISTANCE ARE THE SAME AS THE BEARING AND DISTANCE NOTED THEREON.

- BASIS OF BEARINGS**
- THE BEARING OF THE CENTERLINE OF AXTELL STREET, N 17° 08' 00" W, IS BASED UPON THE CENTERLINE OF AXTELL STREET, N 17° 08' 00" W, AS SHOWN ON PLAT #111, VOLUME 19, PAGE 18, RECORDS OF THE COUNTY OF MONTEREY, CALIFORNIA.
 - ALL OTHER BEARINGS ARE MEASURED FROM THIS CENTERLINE.
 - ALL BEARINGS ARE TRUE BEARINGS.
 - ALL DISTANCES ARE IN FEET AND DECIMALS THEREOF.
 - ALL DISTANCES ARE MEASURED ALONG THE CENTERLINE OF THE ROAD.
 - ALL DISTANCES ARE MEASURED ALONG THE CENTERLINE OF THE ROAD.
 - ALL DISTANCES ARE MEASURED ALONG THE CENTERLINE OF THE ROAD.

- LEGEND**
- ROAD BOUNDARY LINE
 - SUBDIVISION BOUNDARY LINE
 - PROPERTY BOUNDARY LINE
 - EASEMENT BOUNDARY LINE
 - UTILITY BOUNDARY LINE
 - EASEMENT BOUNDARY LINE
 - UTILITY BOUNDARY LINE
 - EASEMENT BOUNDARY LINE
 - UTILITY BOUNDARY LINE