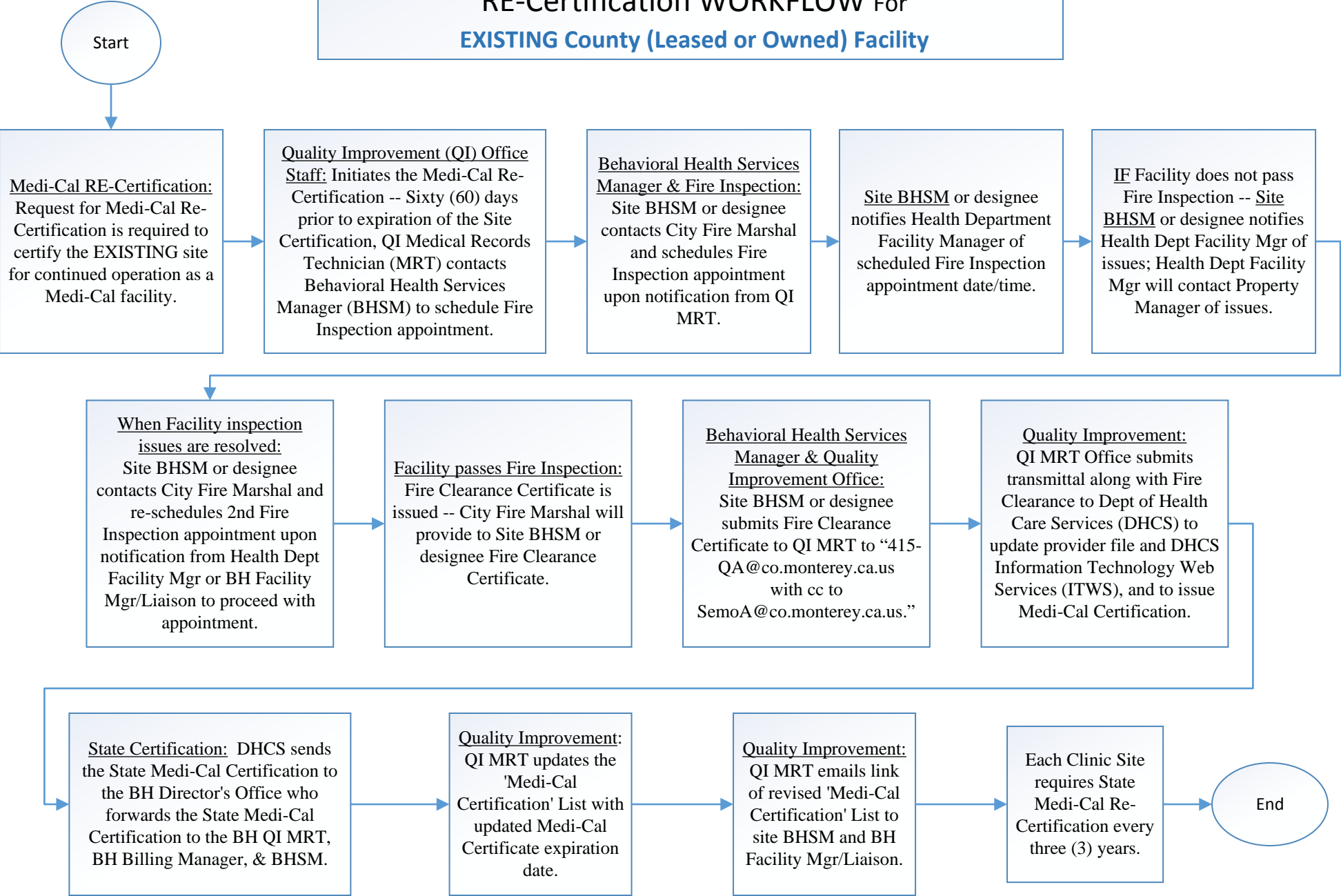
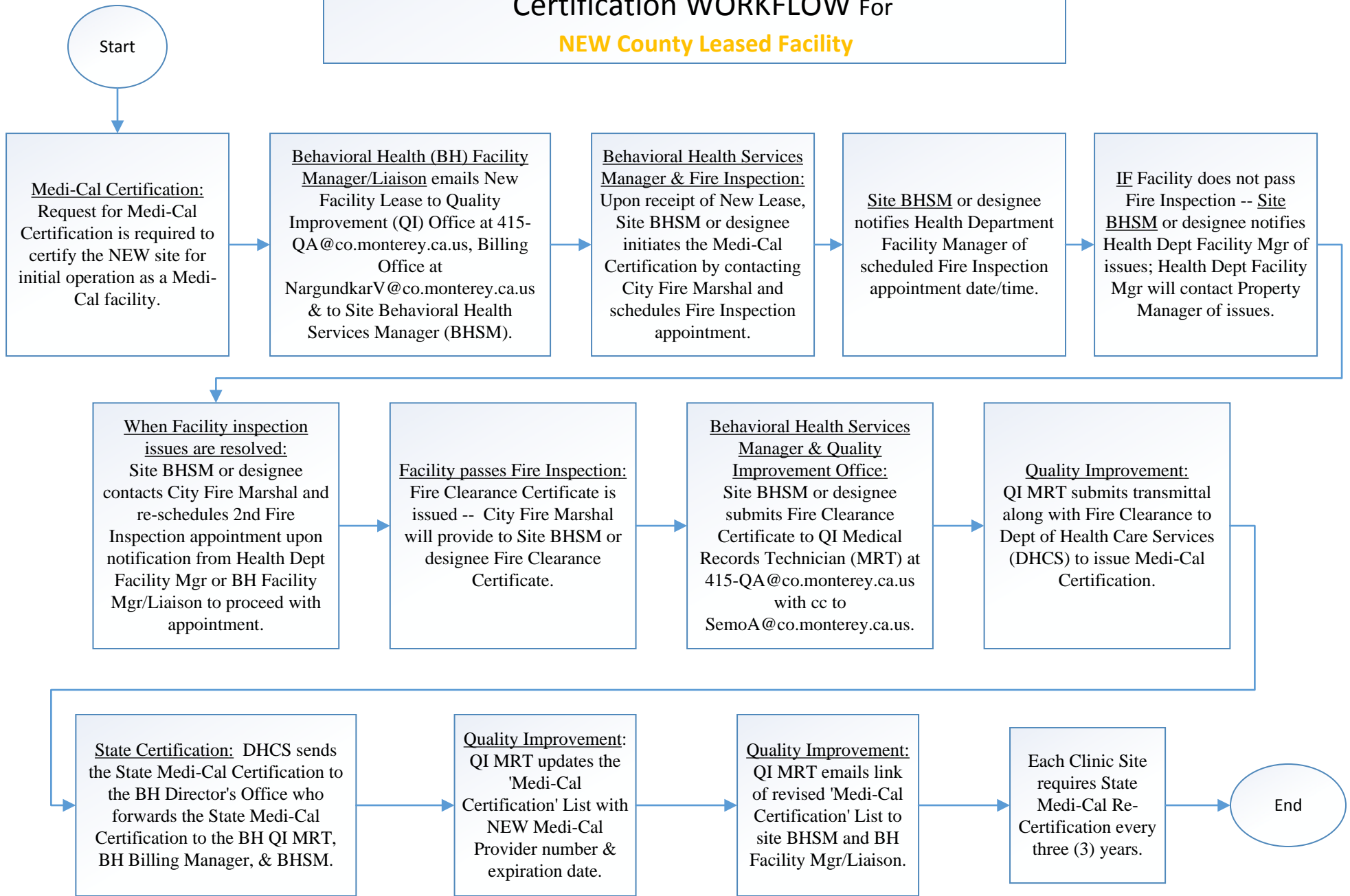


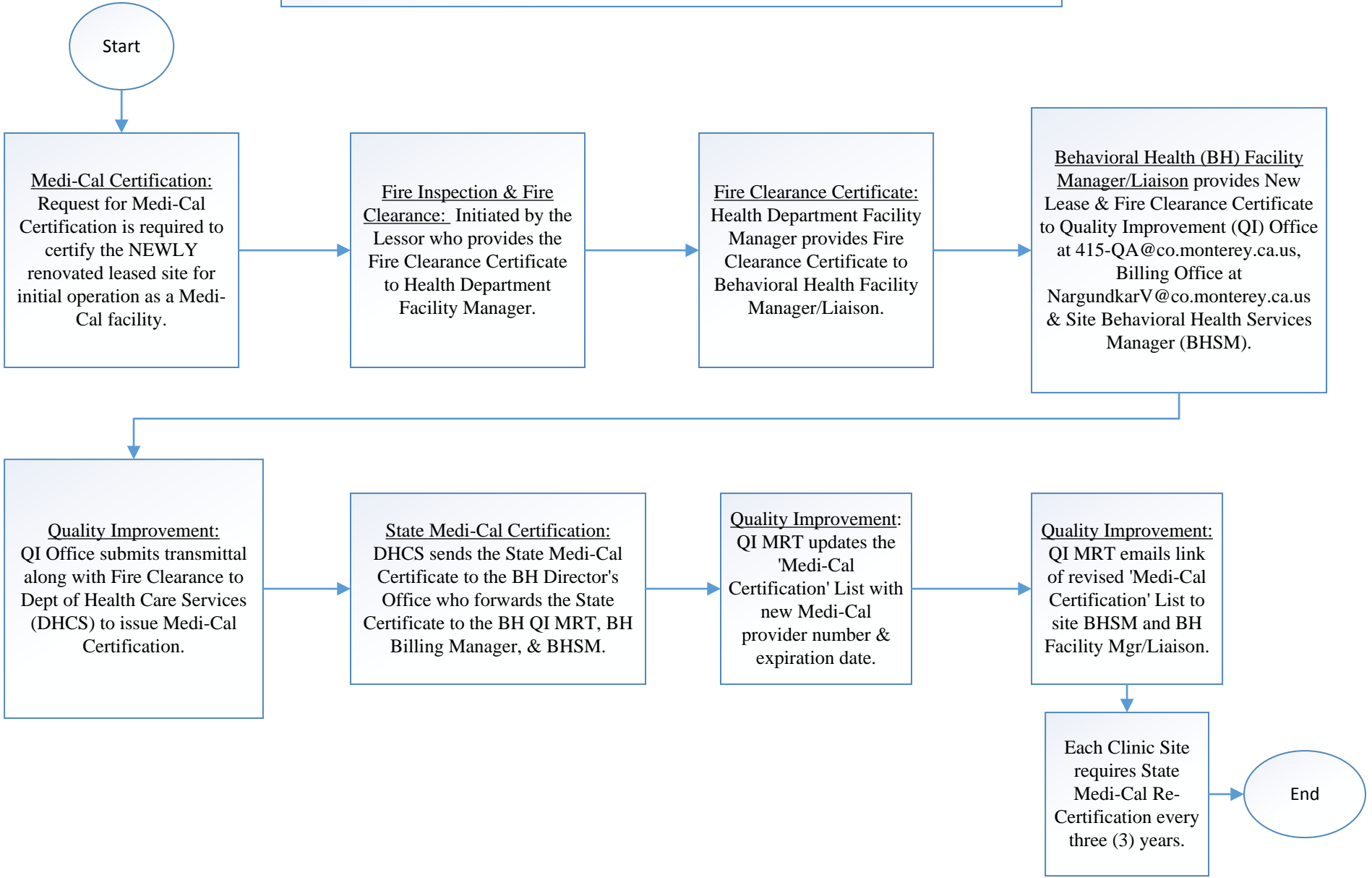
# Behavioral Health Bureau Medi-Cal RE-Certification WORKFLOW For EXISTING County (Leased or Owned) Facility



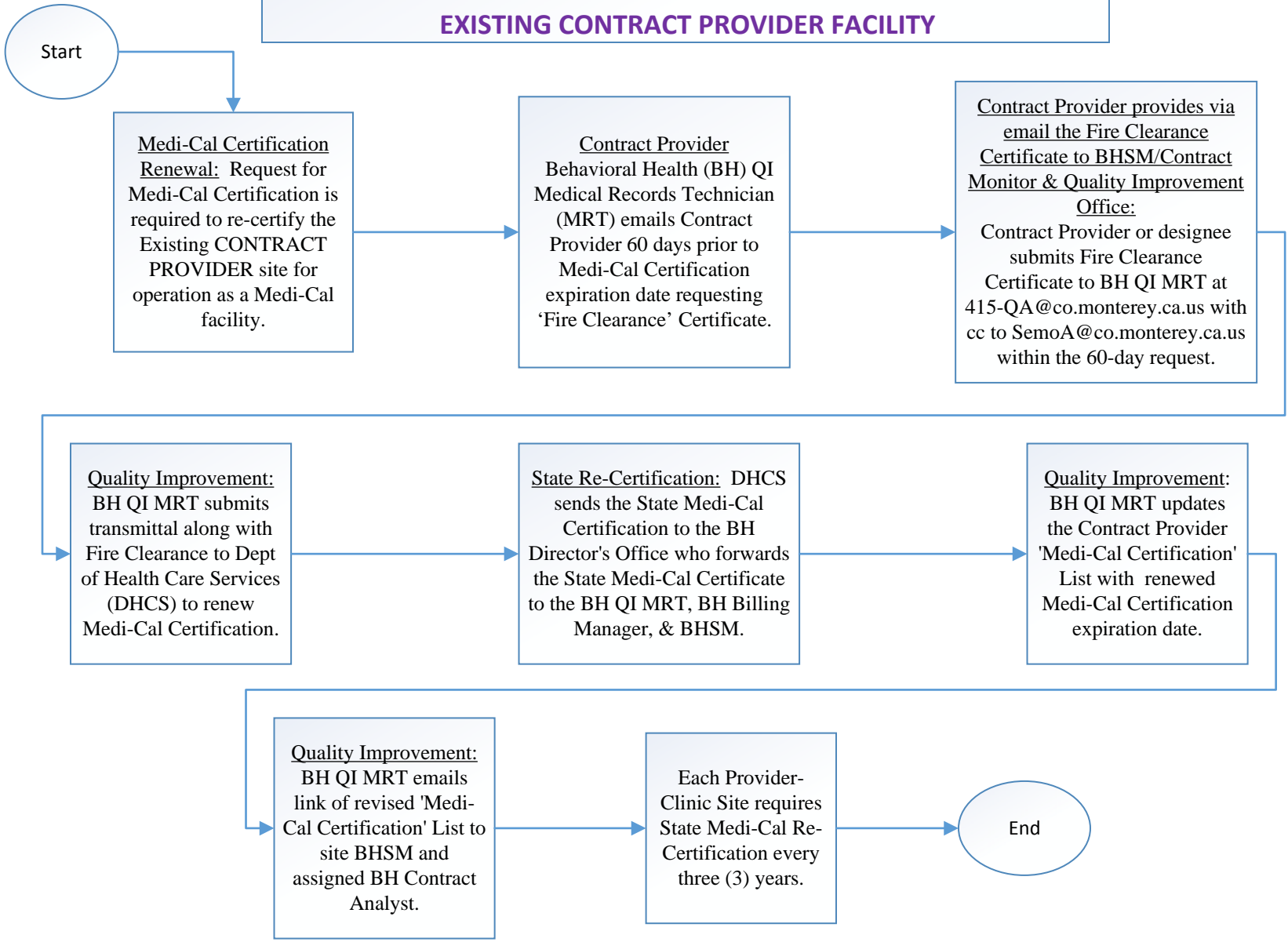
# Behavioral Health Bureau Medi-Cal Certification WORKFLOW For NEW County Leased Facility



**Behavioral Health Bureau**  
**Medi-Cal Certification WORKFLOW**  
 For **NEW County Lease with County Requested Renovations Facility**

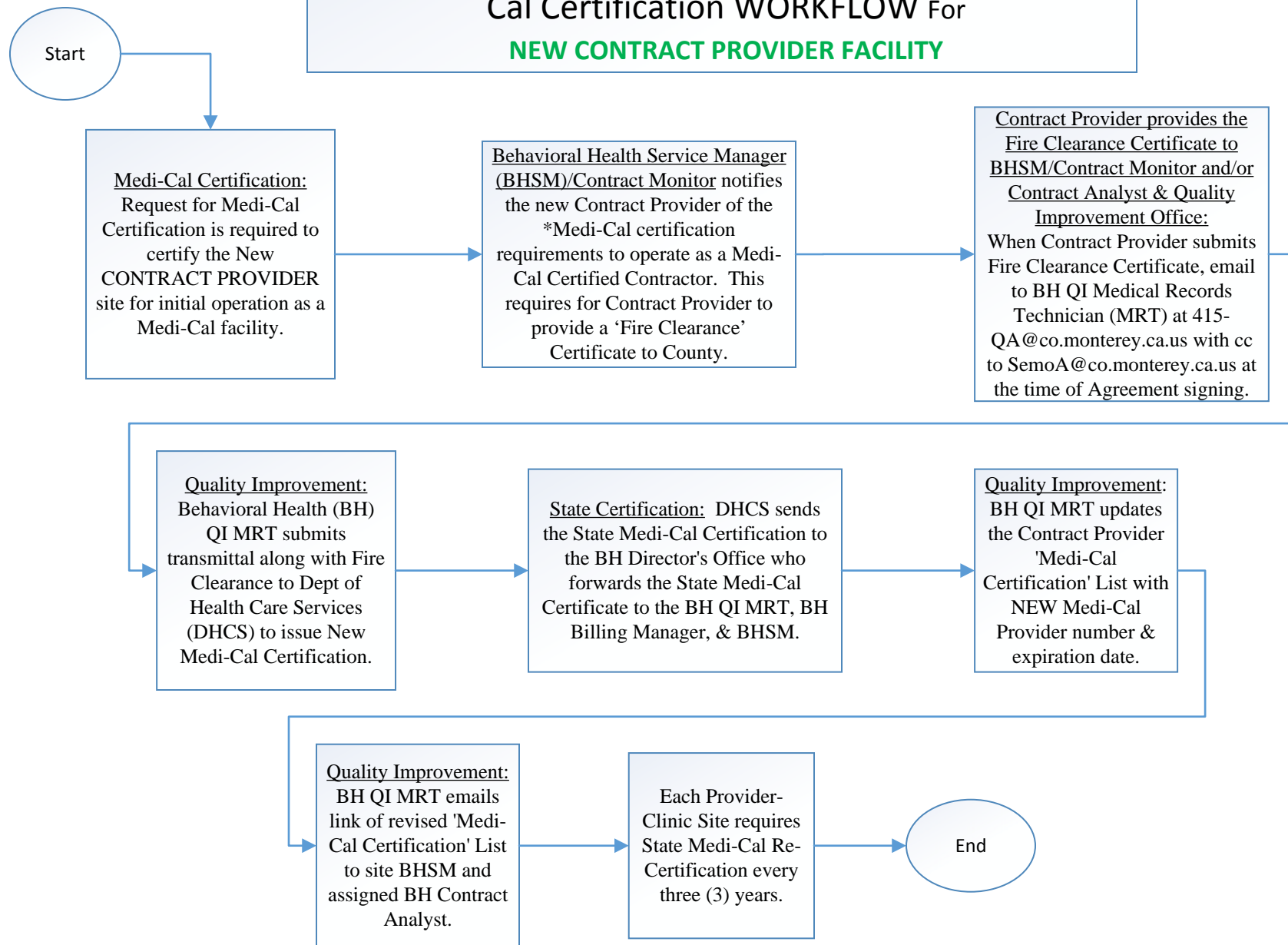


# Behavioral Health Bureau Medi-Cal Certification WORKFLOW For EXISTING CONTRACT PROVIDER FACILITY



In accordance with the Mental Health Services Agreement: Medi-Cal Certification. If Contractor is an organizational provider of Medi-Cal specialty mental health services, Contractor shall maintain [Medi-Cal] certification during the term of the Agreement. This includes complying with all staffing and facility standards required for organizational providers of Medi-Cal specialty mental health services that are claimed and notifying County's Contract Monitor in writing of anticipated changes in service locations at least sixty (60) days prior to such change.

# Behavioral Health Bureau Medi-Cal Certification WORKFLOW For NEW CONTRACT PROVIDER FACILITY



\*In accordance to the Mental Health Services Agreement: Medi-Cal Certification. If Contractor is an organizational provider of Medi-Cal specialty mental health services, Contractor shall maintain [Medi-Cal] certification during the term of the Agreement. This includes complying with all staffing and facility standards required for organizational providers of Medi-Cal specialty mental health services that are claimed and notifying County's Contract Monitor in writing of anticipated changes in service locations at least sixty (60) days prior to such change.